

**The Oriental Insurance Company Ltd.  
A-25/27,Asaf Ali Road,,  
New Delhi -110002**

**Tender Documents**

**NAME OF WORK:** ADDITIONS AND ALTERATIONS  
INVOLVING CIVIL AND INTERIOR  
WORKS OF PART HRMS DEPARTMENT  
AT GROUND FLOOR

**AT**

**# ORIENTAL HOUSE , A-25/27 ,  
ASAF ALI ROAD , NEW DELHI**

**Lead Consultants:**

Vastu Mandal  
Architects & Interior Designers  
F-328, Lado Sarai,  
New Delhi-110030  
Ph 41665455 Fax 41665455  
E-Mail –vastumandal@gmail.com

**PART –II**

**FINANCIAL BID**

## SECTION V - BOQ

S.No	Description of item	Unit	Qty	Rate ( Rs )	Rate in Words	Amount(Rs)
i	Rates are for working at all heights including cost of centering shuttering and scaffolding unless other wise mentioned					
ii	All internal woodworks including inner surface of plywood shall be treated with anti termite wood preservative against borer pests and white ants. All internal frame works shall be sal wood unless otherwise specified. All exposed edges of plywood/blockboard shall be fixed with 3mm teak wood lipping. All ply wood and block board shall be first quality BWR grade of plywood bonded with synthetic resin adhesive (phenol bonded) as per IS 303/AA grade and IS 1659 respectively.					
iii	All the exposed veneer shall be finished with approved matt melamine polish unless other wise specified of approved shade.					
iv	The laminates and Veneers shall be fixed in approved patterns including making grooves etc as per directions					
v	Where ever basic prices are given they shall be inclusive of all taxes					
vi	Wherever mentioned Premium laminate shall mean SUNMICA TREND or equivalent approved collection					

## SECTION - A

### 1 Civil Works

1.1 Demolishing cement concrete including disposal of material within 50 metres lead:						
a	1:3:6 or richer mix	Cum	0.25			
1.2 Demolishing R.C.C. work manually/ by mechanical means including stacking of steel bars and disposal of unserviceable material within 50 metres lead as per direction of Engineer - in- charge.						
		Cum	0.2			
1.3 Dismantling tile work in floors and roofs laid in cement mortar including stacking material within 50 metres lead.						
	For thickness of tiles 4 mm to 25 mm thk	Sqm	15			
1.4 Dismantling stone slab flooring laid in cement mortar including material within 50 metres lead stacking of serviceable material and disposal of unserviceable material to all leads and lifts						
		Sqm	10			

S.No	Description of item	Unit	Qty	Rate ( Rs )	Rate in Words	Amount(Rs)
1.5	Demolishing brick work and plaster , tiles etc manually/ by mechanical means including stacking of serviceable material and disposal of unserviceable material within 50 metres lead as per direction of Engineer-in-charge .	Cum	0.5			
1.6	Dismantling aluminium/ gypsum/wooden partitions, doors, windows, fixed glazing and false ceiling including disposal of unserviceable surplus material and stacking of serviceable material with in 50 meters lead as directed by Engineer-in-charge	Sqm	30			
1.7	Dismantling doors, windows and clerestory windows (steel or wood) shutter including chowkhats, architrave, hold fasts etc.to disposing to all leads and lifts	Sqm	7.5			
1.8	Repairs to plaster on walls of all thicknesses in patches of all sizes including cutting the patch in proper shape and preparing and plastering the surface of the walls complete including disposal of rubbish to all leads and lifts With cement mortar 1:4 (1 cement :4 fine sand)(internal)	Sqm	2			
1.9	Brickwork with FPS bricks of class designation 7.5 at above plinth level up to floor V level in all shapes and sizes in :	Cum	1			
1.10	Disposal of building rubbish / malba / similar unserviceable,dismantled or waste materials by mechanical means, including loading, transporting, unloading to approved municipal dumping ground or as approved by Engineer-in-charge, beyond 50 m initial lead, for all leads including all lifts involved.	cum	10			
1.11	Granite work gang saw cut (polished and machine cut) of thickness 18 mm for wall lining (veneer work), backing filled with a grout of average 12 mm thick in cement mortar 1:3 (1 cement : 3 coarse sand), including pointing with white cement mortar 1:2 (1 white cement : 2 marble dust) with an admixture of pigment to match the Granite shade (To be secured to the backing by means of cramps,					
	Granite stone slab Jet Black, Cherry Red, Elite Brown, Cat Eye or equivalent.					
a)	Area of slab upto 0.50 sqm	Sqm	2			
b)	Area of slab over 0.50 sqm	Sqm	4			

S.No	Description of item	Unit	Qty	Rate ( Rs )	Rate in Words	Amount(Rs)
c	Same as 1.11 above but reusing , resizing and refixing the existing granite	Sqm	5			
1.12	Providing edge moulding to 18 mm thick marble stone counters, Vanities etc., including machine polishing to edge to give high gloss finish etc . complete as per design approved by Engineer-in-Charge.	Rm	40			
1.13	Providing andfixing SS cramps as per appovel	Kg	1			
1.14	Providing and laying vitrified floor tiles in different sizes (thickness to be specified by the manufacturer) with water absorption less than 0.08%and conforming to IS : 15622 of approved make in all colours and shades, laid on 20mm thick cement mortar 1:4 (1 cement : 4 coarse sand) including grouting the joints with white cement and matching pigments etc., complete.	Sqm	25			

## 2 Partitions

### 2.1 Low height partitions

a	Dismantling, re-sizing , realigning , refixing and repolishing the existing partition,as per drawing and directions	Sqm	5			
b	Extra on above for providing and fixing new <b>Premium range Laminate</b> in lieu existing vineer /laminate	Sqm	10			
a	Providing and fixing partition, framing out of Soft wood Section 2" x 2" @ 2'0" C/C minimum, both ways horizontally and vertically. The framing shall be finished with 8 mm thk. Commercial ply on both side 1.00 mm thk. <b>Premium range Laminate</b> of approved shade te shall be fixed on both sides of ply. Provide 4" high skirting in out of 1.00 mm thk. metallic shade laminate to fixed as per drawing and direction. Edging out of 3"X 1" Steam Beech with PU polish. The edging shape shall match the existing partitions edging in curve and shape. Rate shall be inclusive of necessary hardware items, etc. Net area of the partition to be measured .	Sqm	9			

### 2.2 Wall panelling

a	Providing and fixing panelling on wall with 12mm thk. water proof ply on wall finished on top with approved 1.0 mm. Thk. laminate premium shade P and 4" high metallic laminate skirting, and strip at top . Wooden, steam beech, moulding, lipping etc. as directed by architect shall be provided wherever required. Complete as per drawing and directions.	Sqm	8			
---	--	-----	---	--	--	--

S.No	Description of item	Unit	Qty	Rate ( Rs )	Rate in Words	Amount(Rs)
------	---------------------	------	-----	-------------	---------------	------------

### 2.3 Glass panels

- |   |  |      |   |  |  |  |
|---|--|------|---|--|--|--|
| a | P/Ftoughened glass panels 12 mm thk.with suitable patch fittings on the partions /table tops etc.The patch fittings will be ozone /equivalent approved make. | Sqm. | 2 |  |  |  |
|---|--|------|---|--|--|--|

## 3 Furnitures/Storages

### 3.1 Tables

- |   |  |     |   |  |  |  |
|---|--|-----|---|--|--|--|
| a | Open Workstations using 19 mm block board/post formed top with storage space below the worktop having two drawers and one openable shutter. One metal key board per work station.including modiyng the existing work stations( <b>T-1</b> ) of tender drawing  | Nos | 2 |  |  |  |
| b | Removing, realigning and refixing the existing work stations along with the storage system, etc including resizing the work station tops to suit the new size of 2'-0"X 3-9" top per work station and finishing as per ( <b>T-1</b> ) of tender drawing i.e providing fixing new hardware such as handles, locks, and Key Board including polishing etc complete in all respect as per directions  | Nos | 4 |  |  |  |
| c | Providing following tables out 3/4" commercial board of approved make. and 1.5mm thick laminate top of approved shade and make. Sides out of 3/4" comercial board and bck out of 1/4" commercial ply. All visible front and side to have 1.0 mm laminate of approved shade, and with 4" high mettalic laminate , as per sample. Inside surfaces to have white laminate 0.8 mm thick. Commercial board to have hot pressed PVC edging. All hardware of approved make. Ready made metal keyboard drawer of approved make. Three drawer of different sizes with " metabox " sides, of approved make. Three drawers to have single locking mechanism. Handles out of SS, of approved make, as per approved sample. Including providing and fixing cable managers.Complete as per drawing and directions ( <b>T-2</b> ) of tender drawing |     |   |  |  |  |
| i | Mgr / Dy Mgr table with side units   | Nos | 5 |  |  |  |

### 3.2 Storages

S.No	Description of item	Unit	Qty	Rate ( Rs )	Rate in Words	Amount(Rs)
------	---------------------	------	-----	-------------	---------------	------------

a LOW HT. STORAGES (1'-4" DEPTH X upto 4'-0 " HT.) (BACK / SIDE )

Providing and fixing low ht. Storage units upto 1'-4" deep.out of 3/4" commercial board , with PVC hot pressed edging, ,, with shutter out of 3/4" commercial board with PVC edging of approved sample , hot pressed. Self closing hinges, SS handles, cupboard lock and back out of 1/4" commercial ply. Front shutter to have 1.0 mm thick premium range laminate of approved make ,internal surfaces to have 0.8 mm white lamination of approved make and top shall have 1.5 mm th premium laminate complete as per drawing and directions.Handles shall be Kich make AIAI 316 grade 96 mm long 12 mm dia for each shutter..( front area for measurements)

Sqm 5

#### 4 Door/ Window / Shutters

4.1 Providing & fixing in place Roller blinds of Vista Screen Series or equivalent approved make, in approved colour shade & pattern. Rate shall include necessary fittings and operation mechanism

Sqm 8

4.2 Providing & fixing anodised powder coated aluminium work for doors, windows, ventilators & partitions with built up standard tubular /appropriate Z sections & other sections of apporved make conforming to IS : 733 and IS : 1285 anodised and transparent or dyed to required shade conforming to IS : 1868 with minimum anodic coating of grade AC . 15 fixed with rawl plug, screws, or with fixing clips, aluminium handles, tower bolt , eye & hooks etc. with expansion hold fastners including necessary filling up of gaps at junctions at top , bottom and sides with required PVC/ neoprene felt etc. aluminium sections shall be smooth rust free straight, mitred and jointed mechanically where ever required including cleat angles, aluminium snap beading for glazing/ panelling, CP brass/ stainless steel screws all compelte as per architectural drawings and direction of Engineer-in-Charge.including carriage of materials in all leads and lifts.( Glazing and panelling to be paid for extra )

a **For fixed portions** Powder Coated aluminium ( Minimum thickness of powder coating 50 micron external grade PP grade)

Kg 50

S.No	Description of item	Unit	Qty	Rate ( Rs )	Rate in Words	Amount(Rs)
b	Providing and fixing glass /glazing in aluminium door ,window,ventilator shutters etc. with PVC/neoprene gasket etc. Complete as per the architectural drawings and the directions of engineer -in-charge ( cost of aluminium beading shall be paid in basic Item )					
	Toughned Glass glass panes of 8 mm thickness	Sqm	2			
4.3	Supplying and fixing rolling shutters of approved make, made of required size M.S. laths, interlocked together through their entire length and jointed together at the end by end locks, mounted on specially designed pipe shaft with brackets, side guides and arrangements for inside and outside locking with push and pull operation complete, including the cost of providing and fixing necessary 27.5 cm long wire springs manufactured from high tensile steel wire of adequate strength conforming to IS: 4454 -part 1 and M.S. top cover of required thickness for rolling shutters.					
c)	80x0.90 mm M.S. laths with 0.90 mm thick top cover.	Sqm	5			
4.5	Dismantling and refixing of existing rolling shutters along with pipe shaft with brackets ,side guides and arrangement for inside and outside locking with push and pull operations , wire springs and M.S. top cover. complete in all respect as per directions. ( While dismantling the existing shutters care shall taken not to disturb the exsting granite cladding . Vertical slits on the granite are to be made 6" from side guides and along the length of guides as a precaution to protect the existing stone. Any damage to the stone beyond six inches shall be replaced by contractor at his cost )					
a)	Existing shutter M.S. laths alongwith operation mechanism and top cover including accessories	Sqm	25			
b)	Additional cost on 4.5a, per shutter , for providing and fixing new 27.5 cm long wire springs manufactured from high tensile steel wire of adequate strength conforming to IS: 4454 -part 1 in lieu of existing wire springs .	Set	5			
c )	Additional cost on 4.5a, per shutter , for providing and fixing new side guides with arrangment for inside and outside	Set	5			

S.No	Description of item	Unit	Qty	Rate ( Rs )	Rate in Words	Amount(Rs)
4.5	P/F Aluminium composite panel, 3mm thick, with polyethylene core and 0.5 mm thick Aluminium on both surfaces metallic colour , of approved make and shade , fixed to MS frame as per approved section and design and as per manufacturer specifications including sealing the all joints , gaps and grooves with silcon as per approval. Complete as per drawing and directions. ( Surface area of ACP is to considered for measurement purpose )	Sqm.	20			
4.3	P/F 3M sparkle film in natural colour on glass panels as per pattern / design	Sqm.	2			
<b>5 Painting</b>						
5.1	Wall painting with plastic emulsion paint ( roller finish ) of approved brand and manufacture to give an even shade					
a	One or more coats on old work	sqm	40			
b	One or more coats on new work	sqm	10			
5.2	Polishing the wood work French spirit polishing :					
a	One or more coats on old work sqm	sqm	15			
5.3	Enamel Paint Painting with synthetic enamel paint of approved brand and manufacture to give an even shade:					
a	One or more coats on old work.	sqm	5			
b	Two or more coats on new work over an under coat of suitable shade with ordinary paint of approved brand and manufacturer	sqm	5			
<b>6 Electricals</b>						
<b>WIRING</b>						
6.1	Supply & Installation of concealed point wiring using 600v grade 2.5 sqmm copper conductor PVC insulated wires (with proper R,Y,B color code ) pulled through haevy gauge PVC conduits laid concealed over false ceiling or in wall chasesfrom the relevant DB and also including 2.5 Sq.mm Green Colour Copper earth wire and provision of grid plate type ( ROMA) switches and sockets or as approved by Architect. Each circuit feeding not more than 8 points / 800 W as per the following configuration.					



S.No	Description of item	Unit	Qty	Rate ( Rs )	Rate in Words	Amount(Rs)
6.1.1	Primary light points including the cost of 5A switch	Pts	1			
6.1.2	Secondary light points looped from the above point	Pts	1			
6.1.3	5A plug point as primary point	Pts	1			
6.1.4	Secondary 5A Plug point on switch board	Pts	1			
6.2	S & I of point wiring for UPS or stabilized power plug points on workstations / table for computers using 3C X 2.5 Sqmm Cu., PVC sheathed white color flexible cable pulled through already laid floor raceways and taken upto table top using PVC rigid or flexible conduit run within wooden or metal partitions. Each point consisting of 3 Nos of 2 / 3 Pin sockets and 1 No 15A switch, wired together forming one point. Switches and sockets to be (ROMA). Earth wire to be of Green colour only. ( Only 2 tables served by one circuit from UPS DB) Cost is inclusive of necessary cutting the walls and including PVC Pipe required for taking the wires.	Pts	11			
6.3	S & I of points similar to above but to be used as raw power point on the tables consisting of one 5/15A socket with switch of other color and flexible cable of black color & circuit taken from Lighting DB ( 2 tables served by one circuit from LDB/PDB)taken through Raceways.	Pts	11			
<b>6.4 WIRING FOR DATA AND VOICE OUTLETS</b>						
6.4.1	Supply and fixing the following sizes of PVC medium grade ISI marked conduits ( <b>IS : 9537 Part-III</b> ) complete with accessories such as bends, junction boxes, pull boxes etc., in recess or on surface including cutting chases in the walls/floors and making good the same complete as required.					
a	25 mm dia 2.0mm wall thickness	mts	50			
b	32 mm dia 2.0mm wall thickness	mtr.	10			
c	S & I of floor - raceways consisting of 2 Nos of 80 mm x 40 mm x2mm thick rectangular aluminium anodized pipes including chasing and refilling as per the route shown in the drawing and as approved by consultant at site including clam-ing at every open pipe ends by suitable plastic end covers against entry of dust or anyother foreign material.	mtr.	5			
6.4.2	Providing and laying Cat 6 cable (Make : D-Link) for data in existing conduits and providing & terminating with RJ-45 (Krone make) with face plates / I/O Ports in suitable modular / MS box from server / EPABX room to individual work stations and terminating other end with RJ-45 connector including numbering with ferule					
	<b>RJ-45 for data points</b>	points	11			

S.No	Description of item	Unit	Qty	Rate ( Rs )	Rate in Words	Amount(Rs)
6.4.3	Providing and laying Cat 6 cable (Make: D-Link) for voice in existing conduits for voice and providing & terminating with RJ-11 (Krone make) with face plates / I/O Ports in suitable modular / MS box from server / EPABX room to individual work stations and terminate the other end with RJ-11 connector or on a Crone module with numbering of each cable with Ferule					
	<b>RJ-11 for Voice</b>	points	11			
6.4.4	Providing, laying and connecting PVC insulated copper telephone cable of following sizes including termination in approved manner.					
	20-pair	mtr.	25			
<b>Total SECTION -A Carried over to Summary of Quotation</b>						

## SECTION - B

### 7 BUY BACK ( Amount Payable to the owner )

7.1 Buy Back of Following Dismantled and stacked unused Materials on lump sum and as is where is basis including removing the same from site complete in all respect as per direction

a	Rolling Shutters	Sqm	6			
b	Partitions,aluminium/wooden partitions, doors, windows, fixed glazing etc ( item nos 1.6 1nd 1.7 )	Sqm	20			
<b>Total SECTION -B Payable to the owner carried Over to Summary of Quotation</b>						

## SUMMARY OF QUOTATION

**NET QUOTED AMOUNT= TOTAL SECTION A - TOTAL SECTION B**

**Net Quoted amount in words**

**Contractors Signature**

**Contractors Name**

**Contractors Seal**

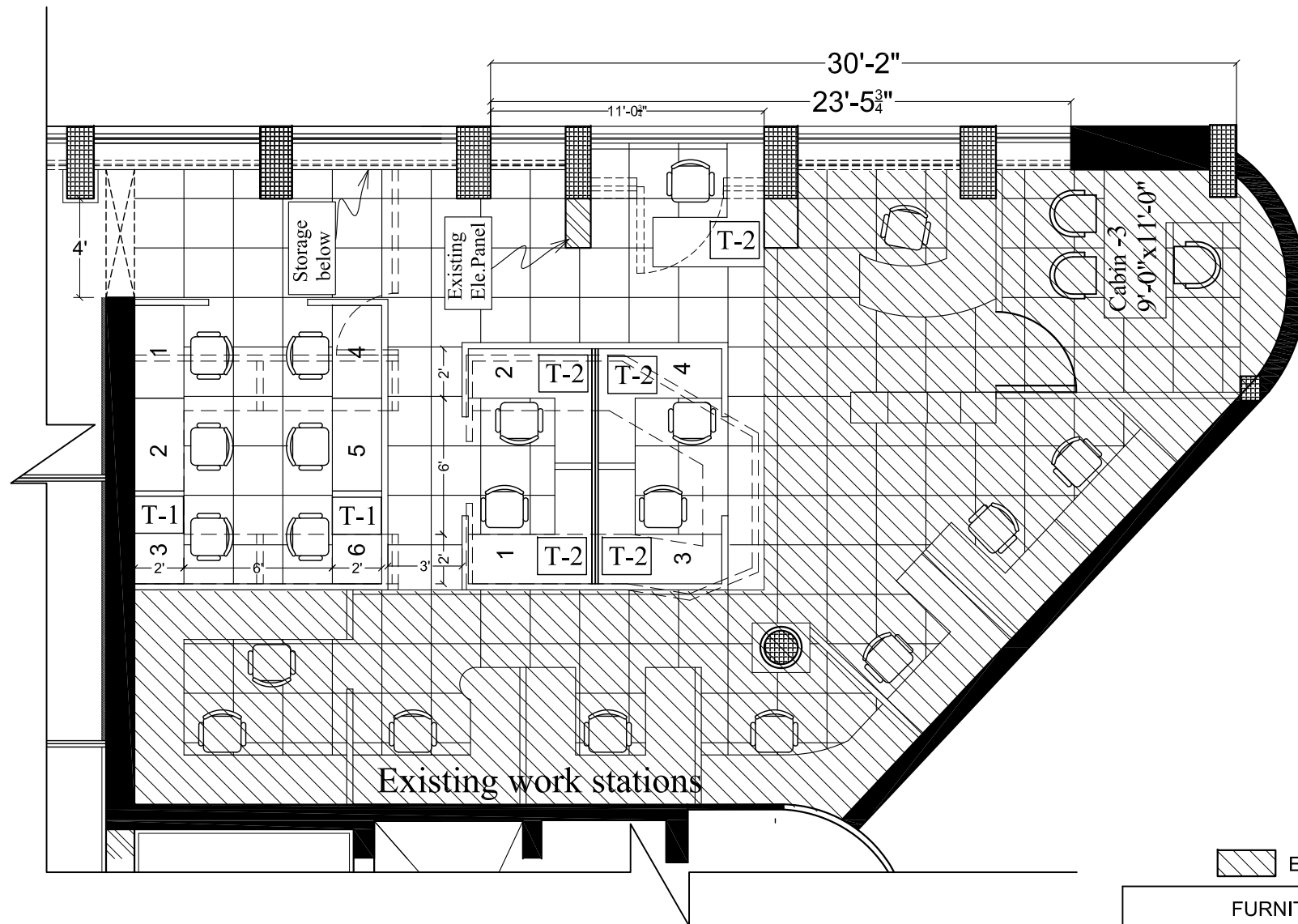
## SECTION V1

**List of Approved makes - As given below or as per architects approval unless specified in bid document**

A	MATERIAL GENERAL		MANUFACTURER/BRAND NAME
1	Anti termite chemical ( Chlorpyriphos emulsifiable concentrate )		NOCIL
2	Adhesive		For wood-Fevicole-SH/Movicole HV
3	Fitting Hardware		EBCO( Earl Bihari ), Hetich,Ozone/Dorma/Kolf
4	Locks		Godrej, Golden
5	Laminate		1.5 mm thk. Greenlam, Century
6	Paints		1.0mm thk. ,Greenlam,Sunmica,Century Asian, Berger, Dulux , Shalimar (Bison) British Paints, Asian Paints or equivalent.
7	Plywood		Century/Duro/Green/Alpro
8	Flush Doors		Century/Duro/Green/Alpro
9	Glass		Modi float glass
10	Prelaminated Particle Board		Archid, Nova pan, Greenlam,
11	Softboard		Sitatex
12	Cement		L&T, Ambuja,Bangur, Birla,JK
13	Tiles		Kajaria, Nitco, Marbonite
14	Paint ( Distemper / Plastic Emulsion		Berger,Asian , Shalimar
15	Vertical Blinds		Mac/Vista levelor/ as approved
16	False Ceiling		Aerolite/Gyproc/Daiken
17	Aluminium Composite Panel		Eurobond, Alomax, Sunbond
18	Acrylic solid surface		Corian, Hanex, LG,
19	Locks,Hardware		Hettich/Kich/Dorset/Doors
20	Vitreous China Sanitaryware		HINDWARE/CERA
21	C.P fittings		JAQUAR/GEM
22	C.P Bottle Trap		KINGSTON/JAQUAR
23	Bath Room C.P accessories		JAQUAR/ESS ESS
24	G.I. and M.S. pipes		JINDAL HISSAR
25	CPVC		AJAY/ASTRA/SUPREME
26	False Ceiling		Aerolite/Gyproc/Daiken
27	Chairs, SS Sofa,		Godrej, Featherlite

<b>B</b>	<b>MATERIAL</b>	<b>MANUFACTURER/BRAND NAME</b>
	<b>ELECTRICAL</b>	
1	LT Panels	CPRI type test passed vendor
2	MCCB	L&T,SEIMENS,MERLIN GERIN(FRANCE)
3	MCB,RCCB & DISTRIBUTION BOARDS	LEGRAND,L&T,MERLIN GERIN.
4	CONDUIT	BEC ,AKG
5	COPPER WIRE	SKYTONE,RALLISION,PHINOLEX,RAJNIGANDHA.
6	POWER CABLES	CCI ,HAVELLS,RALLISION,GEMS CAB.
7	FITTING	PHILIPS ,CROMPTION
8	SWITCH & SOCKETS	MK ,ANCHOR ROMA.
9	CABLE END TERMINATION	COMMETT
10	THIMBLES	DOWELLS
11	TELEPHONE TAG BLOCK	KRONE/AMP/AVAYA
12	XLPE / PVC Insulated Aluminum Conductor	Skytone/Polycab/Glostar/Havells/KEI
13	Telephone Wires/cables	Skytone / Polycab/KEI / Havells
14	Lights Fittings	Wipro, Philips, Bajaj
<b>C</b>	<b>FIRE FIGHTING</b>	
1	Jindal hissar / Surya	Jindal hissar / Surya
2	Butterfly Valve	SANT/C & R / KSB
3	Pressure Switches	C & R / Advance
4	Pressure Gauges	Indfos or approved equal
5	Branch Pipe	MINIMAX /New age
6	Fire Extinguisher	MINIMAX / Fire axe/Safe Guard
7	Flow Switch	SYSTEM SENSOR/ RAPID CONTROL
8	Ball Valve	SANT / ZOLOTO
9	Sprinkler	Tyco / VKing / H.D.

	MATERIAL	MANUFACTURER/BRAND NAME
<b>D</b>	<b>AIR CONDITIONING</b>	
<b>1</b>	<b>EQUIPMENT/UNIT</b>	
	Ducatble Split Unit	Bluestar/Carrier/Voltas/Hitachi/Toshiba
<b>2</b>	<b>FANS</b>	
<b>a</b>	Inline Fan	Systemair/ Sphere/Greenheck/Nicotra/Comefri/Ostberg/Kruger
	Propeller Fan	Kruger/Marathan
<b>3</b>	<b>PIPING</b>	
<b>a</b>	Refrigerant Copper Pipe	Mandev/Totaline/Rajco Metals/Jindal/Mexflow
<b>b</b>	uPVC Drain Pipe	Polypack/Supreme/Prince/ Finolex
<b>4</b>	<b>INSULATION</b>	
<b>a</b>	Nitrile Rubber	Armaflex K-flex/ Armasound
<b>b</b>	Crossed linked Polyethylene	Torcellene/ Thermobreak/ Armaflex/Paramount/Supreme
<b>c</b>	Glass Wool (Prelaminated/Plain)	Kimmco/ Owens Corning
<b>5</b>	<b>DUCTING &amp; GRILLS</b>	
<b>a</b>	Rectangular	Zeco/ Ductofab/Rolastar/Technofab
<b>b</b>	Round	Atco/GP Spiro/ Caryaire
<b>c</b>	G.I. Sheet Metal Duct	Jindal/National/Tata/SAIL/ Nippon
<b>d</b>	Grills/ Diffusers	Airflow/Dynacraft/Ravistar/Caryaire/Servax/-Mapro/Novex
<b>e</b>	VCD/Gravity louvers/Exhaust & fresh air louvers	Air Flow/MaproCaryaire/Ravistar/Servax/Novex
<b>f</b>	Fire and Smoke Dampers	Airflow/ Caryaire/ Ravistar/ Dynacraft/ Servex /Novex
<b>g</b>	Structure Steel	Rana/ Rati/ or Equivalent ISI marked as approved.
<b>h</b>	Fire Sealant	Hilti / Birla3M
<b>i</b>	Dash Fastners	Hilti / Fishers



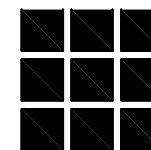
FURNITURE SCHEDULE				
S.N	Types of Tables	Symbol	Size	Qty.
1.	Single Table(work station)	T 1	3'-9" x 2'-0"	6
2.	Officers (with side table 1'-3"x 3'-0")	T 2	4'-6" x 5'-0"	5

**PROJECT-**  
 Interior, Furnishing & Electrical works at HRMS  
 Department at Ground Floor at 'ORIENTAL  
 HOUSE - A-25/27, ASAF ALI ROAD, NEW  
 DELHI - 110002'

**DRG. TITLE-**  
 Layout Plan

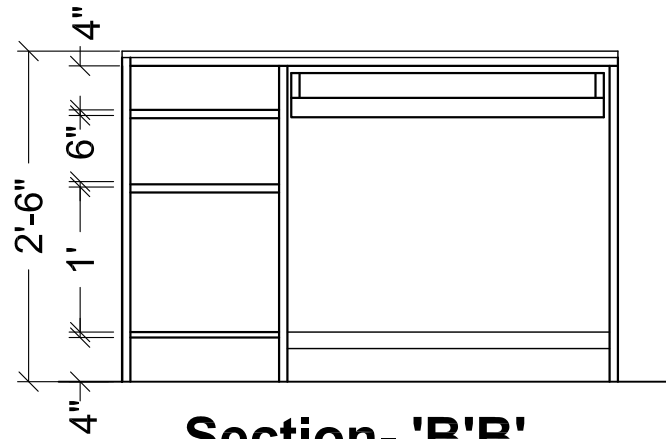
**DATE-**  
 20.06.15

**Drg No.**  
 01

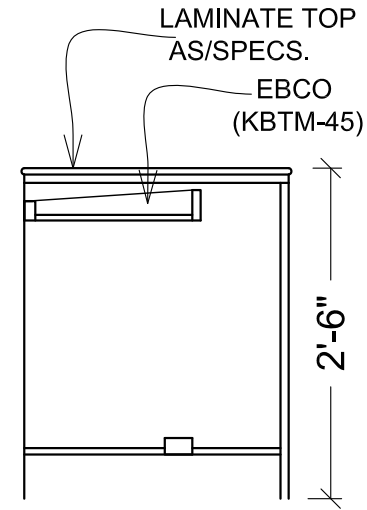


**VASTU MANDAL**

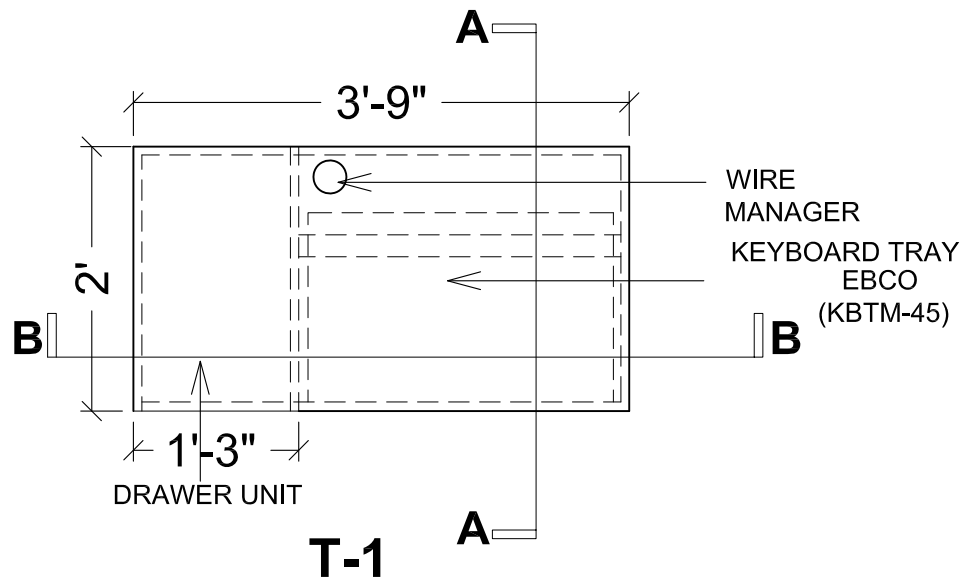
Architects, Engineers & Interior Designers  
 F-328, Lado Sarai, Old M.B Road, N.D- 30  
 Ph. 41665455, E-mail- vastumandal@gmail.com



**Section- 'B'B'**



**Section- 'A'A'**



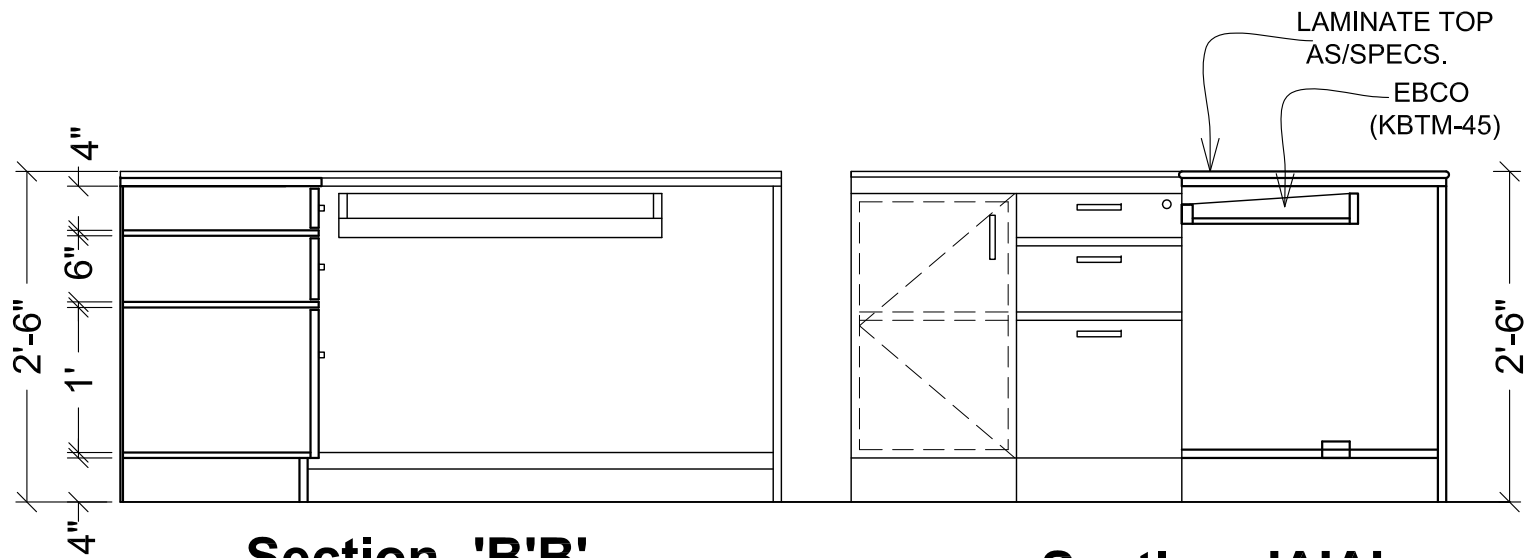
**T-1**

**PROJECT-**  
Interior, Furnishing & Electrical works  
at HRMS Department at Ground  
Floor at 'ORIENTAL HOUSE -  
A-25/27, ASAF ALI ROAD, NEW  
DELHI - 110002'

Drg. Title  
**T-1 Detail**

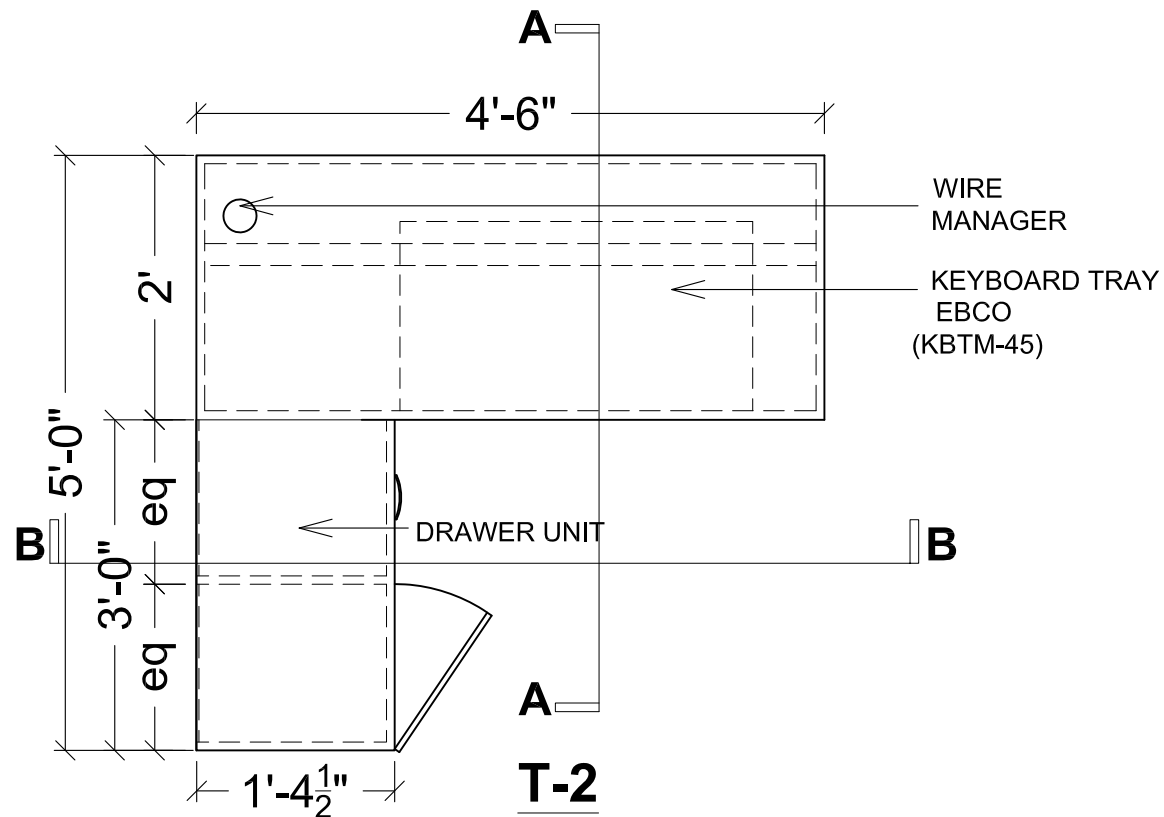
**VASTU MANDAL**  
Architect, Engineers & Interior Designers  
F - 328 Lado Sarai, Mehrauli, N. Delhi - 30  
Ph. 41665455 E-mail vastumandal@gmail.com

Date 20-06-15	Drg No. 02
Scale NTS	



**Section- 'B'B'**

**Section- 'A'A'**



**T-2**

*PROJECT-*  
Interior, Furnishing & Electrical works  
at HRMS Department at Ground  
Floor at 'ORIENTAL HOUSE -  
A-25/27, ASAF ALI ROAD, NEW  
DELHI - 110002'

Drg. Title  
*T-2 Detail*

**VASTU MANDAL**  
Architect, Engineers & Interior Designers  
F - 328 Lado Sarai, Mehrauli, N. Delhi - 30  
Ph. 41665455 E-mail vastumandal@gmail.com

Date 20-06-15	Drg No. 03
Scale NTS	